

3rd GRADE

WELCOME

Meet the 3rd Grade Teachers!

Mrs. Kimbarow

Ms. Choi

Mrs. Tsahalis

Ms. Scogin

Ms. David

Because of time constraints,
please hold all questions. If you
have any questions, please email
your child's teacher.

Phonics

- Builds on the essential components of structured literacy
- Focuses on word structure, advanced spelling rules, and morphology
 - Parts of words
 - Word structures (digraphs and blends)
 - Syllable types

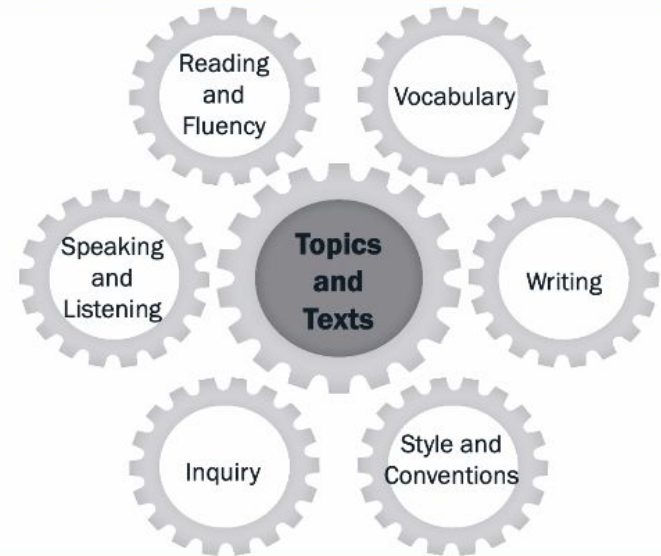
Handwriting *

Literacy

	Module 1	Module 2	Module 3	Module 4
3	The Sea Why do people explore the sea? Informative Writing	Outer Space How do people learn about space? Opinion Writing	A New Home How do stories help us understand immigrants' experiences? Narrative Writing	Artists Make Art What is an artist? Informative Writing (Research)

- Read and study award-winning fiction and nonfiction texts, famous works of art, videos, photographs, and more
- Teach students how to read and analyze texts of different genres
- Teach students how to write and speak clearly, logically, and effectively

INTEGRATED APPROACH



Social Studies

- Introduction to World Geography and World Communities
- Case Studies of Communities Around the World
- Independent Study



Math

Standards for Mathematical Practices:

To help students **SOLVE** and **TALK** about their mathematical thinking!

Math Topics 2024-2025

Introducing Multiplication

Area and Multiplication

Wrapping Up Addition and Subtraction within 1,000

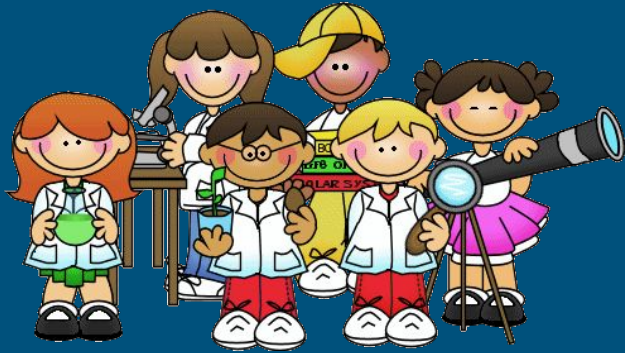
Relating Multiplication to Division

Fractions as Numbers

Measuring Length, Time, Liquid Volume, and Weight

Two-dimensional Shapes and Perimeter

Cluster Classes



- Science
 - Twice a week with Ms. Mackler
 - Art
 - Once a week with Ms. Vazirani
 - Physical Education
 - Twice a week with Coach Barna and Coach Ramos
-

Enrichment

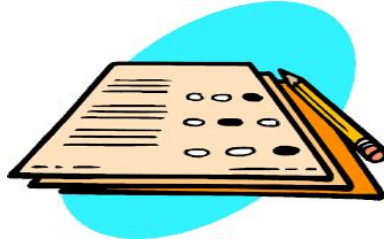
In School Opportunities:

- Music
- Chess
- TADA Youth Theatre Program

Before/After-School:

- YMCA
 - Hudson Guild
 - Intrepid
 - Amazing Athlete
 - Chess
-

State Tests



**Important
Dates**

ELA Exam
April 2025

Math Exam
May 2025

Birthday Celebrations

If you would like to celebrate your child's birthday in school, please email your child's teacher to coordinate at least a week before!

- Birthday treats must be individual items and nut free (EX: Donuts, cupcakes, etc.)
- If your child has an allergy please let your teacher know



BE SAFE

free from
harm or risk

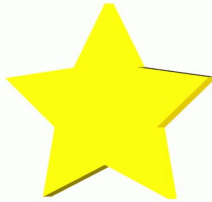
BE RESPONSIBLE

being dependable,
making good
choices, and
taking
accountability for
your actions

BE RESPECTFUL

accept somebody
for who they are,
even when they're
different from you
or you don't agree
with them

PS 33 Core Values



BE KIND

listening, feeling,
and understanding
others' needs and
trying to help meet
those needs

Homework

- Students should be reading at least 30 minutes a night and complete a reading log.
 - Homework will vary throughout the year. Please expect either an assignment/project/game or worksheets to be completed at home.
-

PS 33 Grading Policy

Grading Scale

Performance levels will be used in core subject areas:

Level 4: Excels in Standards/Exceeding Grade Level Standards

Level 3: Proficient/Meeting Grade Level Standards

Level 2: Below Standards/Approaching Grade Level Standards

Level 1: Far Below Grade Level Standards

Scale Score Equivalence
4 = 90+
3 = 80-89
2 = 65-79
1 = 64 -0

PS 33 Grading Policy

Grades 3-5 Grading Policy

		Math		ELA	
Assessments/Tests	70%	Checkpoints (30%) (Quizzes)	EOU (40%) (Final Assessment)	EOM Task (40%) (Final Assessment)	All other major assessments (<i>focusing question tasks, new-read assessments, mid-module, vocabulary</i>) (30%) (Quizzes)
Participation	15%	Classroom discussions, partnerships, group work		Classroom discussions, partnerships, group work, socratic seminars(<i>rubric given in module</i>)	
Classwork	15%	Small group work, conferences, cool-downs, notebook/workbook checks, etc. <i>* cool-downs to be used to guide teacher instruction</i>		Small group work, conferences, checks-for-understanding, etc.	

Marking Periods & Report Cards

Marking Period	Start Date	End Date	Report Card Release Date	# of Days in the Marking Period
1	9/5/24	12/06/24	12/18/24	(58 days)
2	12/9/24	3/14/25	3/26/25	(55 days)
3	3/17/25	6/13/25	6/26/25	(56 days)

Attendance

*It is **important** that students are in school everyday. Absences will negatively impact classwork and participation grades.

Daily Snapshot

Period 1: ELA

Period 2: ELA

Period 3: Phonics

Period 4: LUNCH

Period 5: Math

Period 6: Centers

Period 7: Special Class

Arrival

*It is **imperative** that students come on time (8:30am)! We will begin instruction promptly.

*If your child is late, they will be missing important instruction which will affect their learning and grades.

*Breakfast is provided for all students, however students are expected to be finished eating by the time instruction begins.

Dismissal

If there are any changes to your child's dismissal schedule, please

- Email your child's teacher **AND contact the Main Office**
 - A confirmation will be sent if the message has been received

Dismissal is at 2:35 pm. Please meet your child and their teacher in the school yard. Students picked up after 2:40 will be brought into the gymnasium for "late pick up".

Parent To Do List:

- Sign into your child's google classroom. Please use your child's DOE account (ending with @nycstudents.net)
- Complete beginning of the year forms

Classroom Codes:

- Ms. Choi: **jh34gyt**
- Mrs. Tsahalis: **g6xx242**
- Ms. David & Ms. Scogin: **kemqhp7**
- Mrs. Kimbarow: **xnpzxxe**

Additional Reminders

- Send in a water bottle with your child's name on it every day
 - Please make sure it is filled up daily!
- Students must be able to tie their own shoelaces
- Send in a sweater; temperatures in the classroom fluctuate
- Personal devices should NOT be used for communication during school hours (Smart watches, cell phones)

Alone we can
do so little;
together we can
do so much.

Thank You

Mrs. Kimbarow-

kimbarow@ps33chelseaprep.com

Ms. Choi -

choi@ps33chelseaprep.com

Mrs. Tsahalis -

tsahalis@ps33chelseaprep.com

Ms. Scogin -

lscogin@schools.nyc.gov

Ms. David- ADavid8@schools.nyc.gov

Expectations for Next Year

- Multiplication facts (1-12)
- Reading and understanding multi-step word problems
- Adding and subtracting WITH regrouping
- Reading Fluency
- Handwriting
- Typing/ using a computer (signing in and logging in)
 - *2nd grade chromebooks will loop up with students until 5th grade

SUPPLIES: DO NOT SHIP THEM TO SCHOOL. They will get out