

# Welcome to Kindergarten 2024-2025

Ms. Litt, Mrs. Harvey, Ms. Kissane, Mrs. Scott, and Mr. Arnau



# School Wide Expectations

- Be SAFE
- Be KIND
- Be RESPECTFUL
- Be RESPONSIBLE

## IN OUR CLASSROOM



# Procedures

- Safety procedures
  - Arrival and dismissal procedures
- \*\*\*2:25 PM PICK UP\*\*\*
- Homework



# Daily Routine

Arrival \*8:25 AM\*

Breakfast

Morning meeting

Phonics

Math

Lunch & Recess

Wit & Wisdom (Reading and Writing)

Social Emotional Learning

Cluster

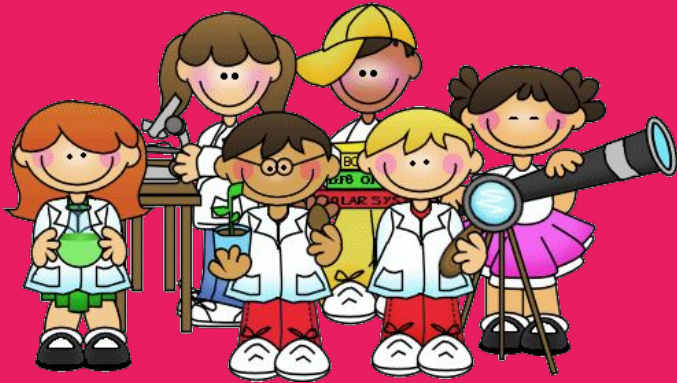
Snack

Choice Time

Dismissal \*2:25 PM\*

\*\*\*EVERYDAY WILL LOOK A LITTLE  
DIFFERENT\*\*\*

# Cluster Classes



- ART
  - 1 x a week
- SCIENCE
  - 2 x a week
- Physical Education/Gym
  - 2 x a week

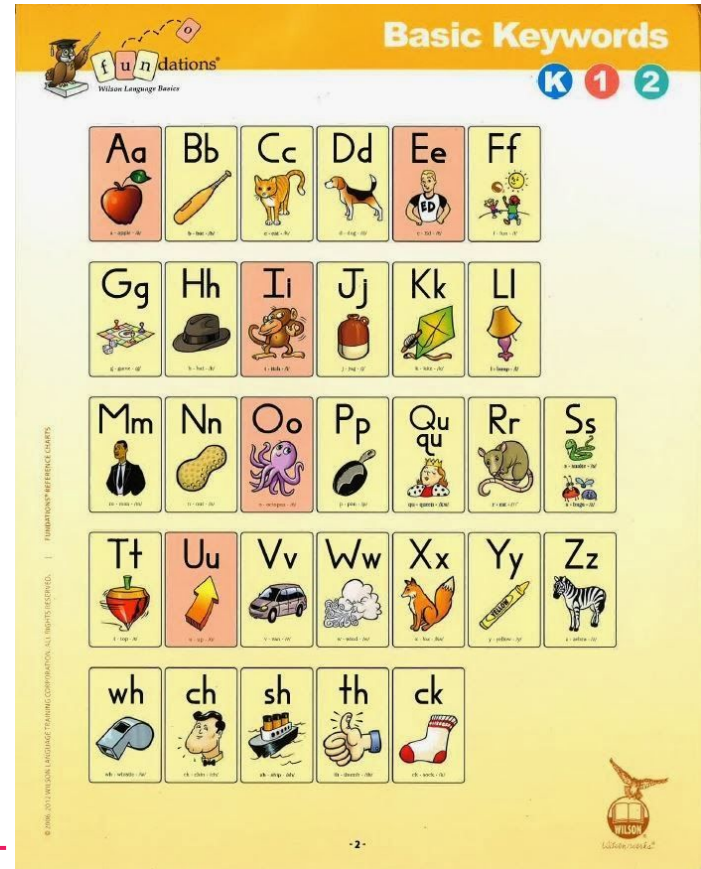
---

# Phonics

## Curriculum: Foundations

- Introduction to Foundations
- Learning lowercase letters/sounds/formation
- Learning uppercase letters/sounds/formation
- Snapwords/Sight words (CVC words)

\*All Kindergarten classes also use Heggerty for extra phonics instruction\*\*\*

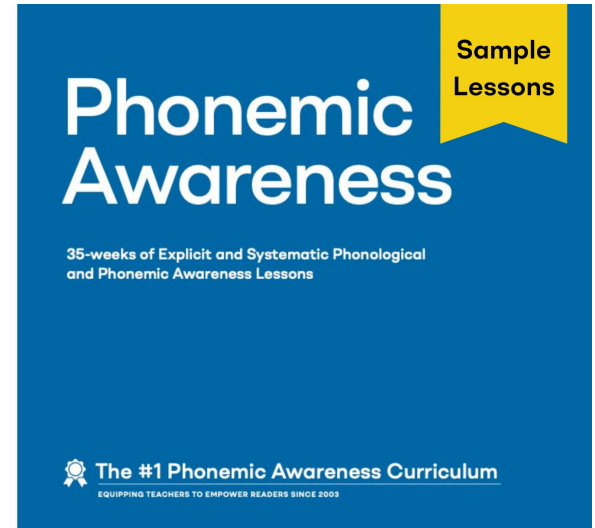


# Phonemic Awareness

- Rhyme
- Phoneme Isolation (initial, final, and medial)
- Blend words, syllables, onset-rime, and phonemes
- Segment words, syllables, onset-rime, and phonemes
- Add syllables and phonemes
- Delete syllables and phonemes
- Substitute syllables and phonemes



KINDERGARTEN  
Curriculum  
2022 Edition



# Reading & Writing Curriculum: Wit & Wisdom

Wit & Wisdom builds knowledge of key topics in history, science, and literature through the study of excellent texts.

- District-wide adoption of Wit & Wisdom is a part of NYC Reads Initiative
- It is a knowledge-building curriculum that integrates both reading and writing

By reading and responding to stories and nonfiction texts, we will build knowledge of the following topics:

**Module 1: The Five Senses**

**Module 2: Once Upon a Farm**

**Module 3: America, Then and Now**

**Module 4: The Continents**



---



# Literature Focus:

- *Wit and Wisdom* exposes students to a diverse range of texts, including fiction, non-fiction, poetry, and folktales.
- Through carefully selected literature, students develop a love for reading and explore different genres and styles.
- The curriculum emphasizes close reading, allowing students to analyze texts for deeper understanding and meaning.



# Language Development

- Wit and Wisdom supports the development of foundational language skills, including vocabulary acquisition, grammar, and syntax.
- Students engage in activities that promote language exploration and usage, both in spoken and written forms.
- The curriculum incorporates speaking and listening exercises to enhance communication skills and comprehension.



# Writing Instruction:

- Writing instruction in Wit and Wisdom focuses on developing students' ability to express themselves effectively through various genres and formats.
- Students learn how to craft narratives, informational texts, and opinion pieces, supported by their reading experiences.
- Writing activities are scaffolded to support students of varying abilities, allowing for individualized growth and development.



# Math

## Curriculum: Illustrative Mathematics

- Unit 1: Math in Our World

Exploring tools and noticing numbers and quantities around them

- Unit 2: Numbers 1-10

Developing counting concepts and skills, including comparing and writing numbers

- Unit 3: Flat Shapes All Around Us

A focus on familiar flat (two-dimensional) shapes.

- Unit 4: Understanding Addition and subtraction

Developing understanding of addition and subtraction by solving story problems

- Unit 5: Composing and Decomposing Numbers to 10

Compose and decompose numbers within 10

- Unit 6: Numbers 0-20

Count and represent objects within 20

- Unit 7: Solid Shapes All Around Us

A focus on solid shapes (three-dimensional) shapes.

- Unit 8: Putting it all Together

Revisit work and fluency goals of the grade

— — —

# Social Emotional Learning

## Curriculum: Sanford Harmony

Unit 1: Diversity & Inclusion

Unit 2: Empathy & Critical Thinking

Unit 3: Communication

Unit 4: Problem Solving

Unit 5: Peer Relationships



# Enrichments:

May include...

- Third Street Music
- TADA! Musical Theater
- Arts Connections: Dance
- Chess
- CMA: Children's Museum of the Arts
- Visits with Oliver
- FIT
- **More to come!**



# FAQs

---

## Q1. What afterschool programs are available?

A: In the building, we have both fee and free based programs. Fee based programs this year are: Amazing Athletes, Chess, and TADA. Free programs this year are: YMCA and for 2nd to 5th graders I Have a Dream.

Outside of school we also have fee and free based programs. We offer a fee based program with Chelsea Piers. Our free program is based at Hudson Guild.

You can enroll or find more information on all the after school programs on the PS 33 website: <https://www.ps33chelseaprep.org/>

## Q2. Will students be going on field trips?

A: We will be going on field trips next year. In the past, we have visited a farm, zoo, theater, and more!

## Q3. How does breakfast, lunch and snack work?

A: Breakfast is eaten in the classroom starting at 8:25 am (when school begins).

Lunch is 3rd period from 10:12-11:02 am. The menu changes daily. You can also send your child with lunch if they are not interested in the school lunch. Do not rely on the menu online, as it is not always accurate.

Kindergarten classes have snack later in the day in their classrooms.

## Q4. What extra help is provided in the classroom?

A: Each grade is provided with one teaching assistant that is shared with the 4 classes. The Kindergarten teaching assistant this year (and previous years) is Ms. Melinda.

## Q5: What are the class sizes in Kindergarten?

A: The maximum amount of students is 25 in Kindergarten.

## Q6. What is the bathroom system?

A: There are bathrooms on each floor for students. In the beginning of the year students will be escorted by their teachers and TAs as a whole group to the bathroom at different times during the day.

As the year progresses, there is a buddy system put into place, where the students will go with a partner to the bathroom. Classrooms have a sign out book and bathroom passes.

# FAQs

---

## Q7. What is ICT?

An Integrated Co-Teaching (ICT) class has students with and without Individualized Education Programs (IEPs) learning together. There are two teachers in an ICT class, one general education/content area teacher and one special education teacher. The teachers work together to support all of the students in the class

## Q8. What is the difference between Gen Ed and G&T?

Gifted and Talented classrooms follow the same curriculum as the General Education classes. The main difference is the G&T classes have a more accelerated pace. All classrooms use assessment data to differentiate learning and create small groups to ensure all learners are taught on their levels.

## Q9. Is there nap time in kindergarten?

No more nap time!

## Q10. Transportation?

A: Walking or if you are out-of-school zone you can sign up for bussing (Please go to pur PS 33 website, click "Information" at the top right corner and then "Bus Information" for further instruction).





Thank You